

# Pyxis<sup>®</sup>

## ST-590 Fluorescent Polymer Inline Sensor User Manual



Water Professionals Deserve Better Tools.  
[www.pyxis-lab.com](http://www.pyxis-lab.com)

# ST-590 Fluorescent Polymer Inline Sensor User Manual

January 29, 2021  
Rev. 3.01

**Pyxis Lab, Inc.**  
1729 Majestic Dr. Suite 5  
Lafayette, CO 80026 USA  
[www.pyxis-lab.com](http://www.pyxis-lab.com)

## Table of Contents

<b>1</b>	<b>Introduction</b>	<b>2</b>
1.1	Main Features . . . . .	2
<b>2</b>	<b>Specifications</b>	<b>3</b>
<b>3</b>	<b>Unpacking Instrument</b>	<b>3</b>
3.1	Standard Accessories . . . . .	3
3.2	Optional Accessories . . . . .	4
<b>4</b>	<b>Installation</b>	<b>5</b>
4.1	ST-590 Piping . . . . .	5
4.2	ST-590SS Piping . . . . .	6
4.3	Wiring . . . . .	7
4.4	Connecting via Bluetooth . . . . .	7
4.5	Connecting via USB . . . . .	8
<b>5</b>	<b>Setup and Calibration with uPyxis® Mobile App</b>	<b>8</b>
5.1	Download uPyxis® Mobile App . . . . .	8
5.2	Connecting to uPyxis® Mobile App . . . . .	9
5.3	Calibration Screen and Reading . . . . .	10
5.4	Diagnosis Screen . . . . .	11
5.5	Device Info Screen . . . . .	11
<b>6</b>	<b>Setup and Calibration with uPyxis® Desktop App</b>	<b>12</b>
6.1	Install uPyxis® Desktop App . . . . .	12
6.2	Connecting to uPyxis® Desktop App . . . . .	13
6.3	Information Screen . . . . .	14
6.4	Calibration Screen . . . . .	14
6.5	Diagnosis Screen . . . . .	15
<b>7</b>	<b>Outputs</b>	<b>15</b>
7.1	4–20mA Output Setup . . . . .	15
7.2	Adjusting 4–20mA Span . . . . .	16
7.3	Communication using Modbus RTU . . . . .	16
<b>8</b>	<b>Sensor Maintenance and Precaution</b>	<b>17</b>
8.1	Methods to Cleaning the ST-590Sensor . . . . .	17
8.2	Storage . . . . .	18
<b>9</b>	<b>Troubleshooting</b>	<b>19</b>
<b>10</b>	<b>Contact Us</b>	<b>19</b>

## **Warranty Information**

### **Confidentiality**

The information contained in this manual may be confidential and proprietary and is the property of Pyxis Lab, Inc. Information disclosed herein shall not be used to manufacture, construct, or otherwise reproduce the goods described. Information disclosed herein shall not be disclosed to others or made public in any manner without the express written consent of Pyxis Lab, Inc.

### **Standard Limited Warranty**

Pyxis Lab warrants its products for defects in materials and workmanship. Pyxis Lab will, at its option, repair or replace instrument components that prove to be defective with new or remanufactured components (i.e., equivalent to new). The warranty set forth is exclusive and no other warranty, whether written or oral, is expressed or implied.

### **Warranty Term**

The Pyxis warranty term is thirteen (13) months ex-works. In no event shall the standard limited warranty coverage extend beyond thirteen (13) months from original shipment date.

### **Warranty Service**

Damaged or dysfunctional instruments may be returned to Pyxis for repair or replacement. In some instances, replacement instruments may be available for short duration loan or lease.

Pyxis warrants that any labor services provided shall conform to the reasonable standards of technical competency and performance effective at the time of delivery. All service interventions are to be reviewed and authorized as correct and complete at the completion of the service by a customer representative, or designate. Pyxis warrants these services for 30 days after the authorization and will correct any qualifying deficiency in labor provided that the labor service deficiency is exactly related to the originating event. No other remedy, other than the provision of labor services, may be applicable.

Repair components (parts and materials), but not consumables, provided during a repair, or purchased individually, are warranted for 90 days ex-works for materials and workmanship. In no event will the incorporation of a warranted repair component into an instrument extend the whole instrument's warranty beyond its original term.

### **Warranty Shipping**

A Repair Authorization (RA) Number must be obtained from Pyxis Technical Support before any product can be returned to the factory. Pyxis will pay freight charges to ship replacement or repaired products to the customer. The customer shall pay freight charges for returning products to Pyxis. Any product returned to the factory without an RA number will be returned to the customer. To receive an RMA you can generate a request on our website at <https://pyxis-lab.com/request-tech-support/>.

### **Pyxis Technical Support**

Contact Pyxis Technical Support at +1 (866) 203-8397, [service@pyxis-lab.com](mailto:service@pyxis-lab.com), or by filling out a request for support at <https://pyxis-lab.com/request-tech-support/>.

## 1 Introduction

The Pyxis ST-590 inline fluorometer sensor measures the concentration of Fluorescent Polymer in water. It can be simply inserted to the compression fitting port of a custom-made tee. The standard ST-001 installation tee provided with each ST-590 sensor, has two ¾ inch female NPT ports and can be placed to an existing ¾ inch sample water line. Pyxis Lab also offers 2" and 3" Tee formats for larger flow installations. The 4–20mA current output of the ST-590 sensor can be connected to any controller that accepts an isolated or non-isolated 4–20mA input. The ST-590 sensor is a smart device. In addition to measuring polymer fluorescence, the ST-590 sensor has extra photo-electric components that monitor the color and turbidity of the sample water. This extra feature allows automatic color and turbidity compensation to eliminate interference commonly associated with real-world waters.

The Pyxis ST-590 sensor has a short fluidic channel and can be easily cleaned. The fluidic and optical arrangement of the ST-590 sensor is designed to overcome shortcomings associated with other fluorometers that have a distal sensor surface or a long, narrow fluidic cell. Traditional inline fluorometers are susceptible to color and turbidity interference and fouling and are difficult to properly clean.

### 1.1 Main Features

The ST-590 measures Fluorescent Polymer in a water sample and includes the following features:

- Easy calibration with using **uPyxis®** Mobile or Desktop App.
- Automatic compensation for turbidity up to 150 NTU and color created by up to 10 ppm iron or equivalent to 10 ppm humic acid.
- Diagnostic information (sensor fouling, color or turbidity over range, failure modes) are available in **uPyxis®** App or via Modbus RTU.
- Easy to remove from the system for cleaning and calibration without the need for any tools.

## 2 Specifications

**Table 1.** ST-590 Specifications

Specification*	ST-590	ST-590SS
Part Number (P/N)	50690	50691
Fluorescent Polymer Range <sup>†</sup>	0.0–20.0 ppm	
Fluorescent Polymer Accuracy	±0.1 ppm	
Excitation Wavelength	410 nm	
Emission Wavelength	450 nm	
Wavelength Accuracy	±1 nm	
Calibration	Two-point calibration against standard solution	
Outputs	4–20mA Analog Output, RS-485 Digital Output with Modbus protocol	
Installation	Custom tee assembly (P/N: ST-001) with 3/4" FNPT socket & threaded ports	3/4" FNPT threaded ports
Cable Length	5 ft with IP67 connectors & 2 ft flying lead with IP67 adapter	
Power Supply	22–26 VDC, 1 W	
Dimension (L × Dia)	6.8 × 1.44 inch (172.7 × 36.6 mm)	See Figure 3
Weight	0.37 lbs (170 g)	2.5 lbs (1148 g)
Material	CPVC	304 Stainless Steel
Operational Temperature	40–104 °F (4–40 °C)	
Storage Temperature	20–140 °F (-7–60 °C)	
Pressure	Up to 100 psi (0.7 MPa)	Up to 290 psi (2.0 MPa)
Enclosure Rating	IP67	
Regulation	CE	

\* With Pyxis's continuous improvement policy, these specifications are subject to change without notice.

<sup>†</sup> The fluorescent polymer concentration scale is based on the polymer containing 0.25 mole % fluorescent monomer. Typical polymer specifications are attached below but may vary by producer.

## 3 Unpacking Instrument

Remove the instrument and accessories from the shipping container and inspect each item for any damage that may have occurred during shipping. Verify that all accessory items are included. If any item is missing or damaged, please contact Pyxis Lab Customer Service at [service@pyxis-lab.com](mailto:service@pyxis-lab.com).

### 3.1 Standard Accessories

- Tee Assembly 3/4" NPT (1x Tee, O-ring, and Nut) P/N: ST-001  
**\*NOTE\*** *ST-001 is not included for ST-590SS*
- 7-Pin Female Adapter/Flying Leads Cable (2 ft) P/N: MA-1100
- User Manual available online at <https://pyxis-lab.com/support/>

### 3.2 Optional Accessories

The following optional accessories can be ordered from Pyxis Customer Service ([order@pyxis-lab.com](mailto:order@pyxis-lab.com)) or Pyxis E-Store at <https://pyxis-lab.com/shop/>.

Pyxis PYXIS INLINE SENSOR ACCESSORIES - SELECT*A*GUIDE		Pyxis
Accessory Name/Description	Part Number	Photo
Pyxis ST Series Cleaning Kit <i>(includes 500mL Sensor Cleaner / Qtips &amp; Pipe Cleaners)</i>	SER-01	
Pyxis TAG-10 <i>(10ppm Fluorescent Polymer Calibration Std - 500mL)</i>	21054	
Pyxis TAG-20 <i>(20ppm Fluorescent Polymer Calibration Std - 500mL)</i>	21053	
Pyxis PTAG-1010 <i>(10ppm Fluorescent Polymer / 100ppb PTSA Combined Calibration Std - 500mL)</i>	21055	
Pyxis PTSA-100 <i>(100ppb PTSA Calibration Std - 500mL)</i>	21001	
0.75" NPT Inline Sensor Tee Assembly <i>(All ST Series Sensors)</i>	50704	
2.0" NPT Inline Sensor Tee Assembly <i>(All ST Series Sensors)</i>	50756	
3.0" NPT Inline Sensor Tee Assembly <i>(All ST Series Sensors)</i>	50775	
ST-002 Inline Sensor Removal PLUG <i>(Allows ST Sensor Removal)</i>	ST-002	
ST Series Sensor Tee Replacement O-Ring <i>(All ST Series Tees)</i>	MA-150	
ST Series Submersion Adapter Kit <i>(Submersible Kit for all ST-Series Sensors)</i>	MA-102S	
MA-WB Bluetooth Adapter for All ST Series Sensors <i>(1x 4-20mA &amp; RS-485)</i>	MA-WB	
Bluetooth PC to Handheld Adapter <i>(For uPyxis Firmware Updates)</i>	MA-NEB	
PowerPack 1 <i>(Single Channel Power Supply w/Bluetooth)</i>	MA-BLE-1	
PowerPack 2 <i>(Dual Channel Power Supply w/Bluetooth)</i>	MA-BLE-2	
PowerPack 4 <i>(Four Channel Power Supply w/Bluetooth)</i>	MA-BLE-4	
MA-1100 <i>(4.9' Flying Lead Cable for All 7Pin Pyxis Sensors)</i>	50747	
MA-C10 <i>(10' Extension Cable for All 7Pin Pyxis Sensors)</i>	50738	
MA-C50 <i>(50' Extension Cable for All 7Pin Pyxis Sensors)</i>	50705	
MA-C100 <i>(100' Extension Cable for All 7Pin Pyxis Sensors)</i>	50706	

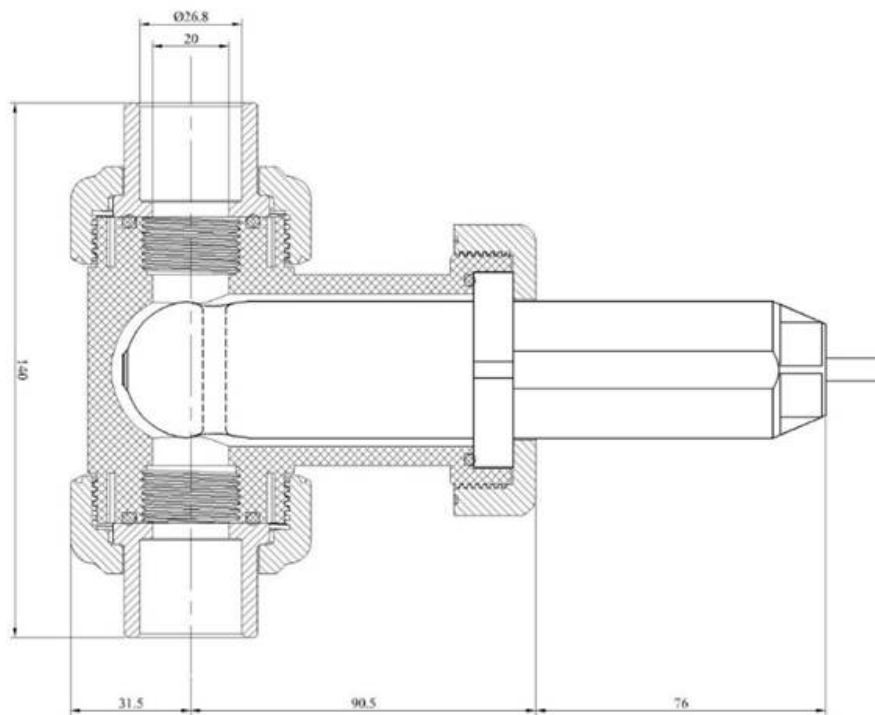
Figure 1.

## 4 Installation

### 4.1 ST-590 Piping

The provided ST-001 Tee Assembly can be connected to a pipe system through the 3/4" female ports, either socket or NPT threaded. To properly install the ST-590 sensor into the ST-001 Tee Assembly, follow the steps below:

1. Insert the provided O-ring into the O-ring groove on the tee.
2. Insert the ST-590 sensor into the tee.
3. Tighten the tee nut onto the tee to form a water-tight, compression seal.

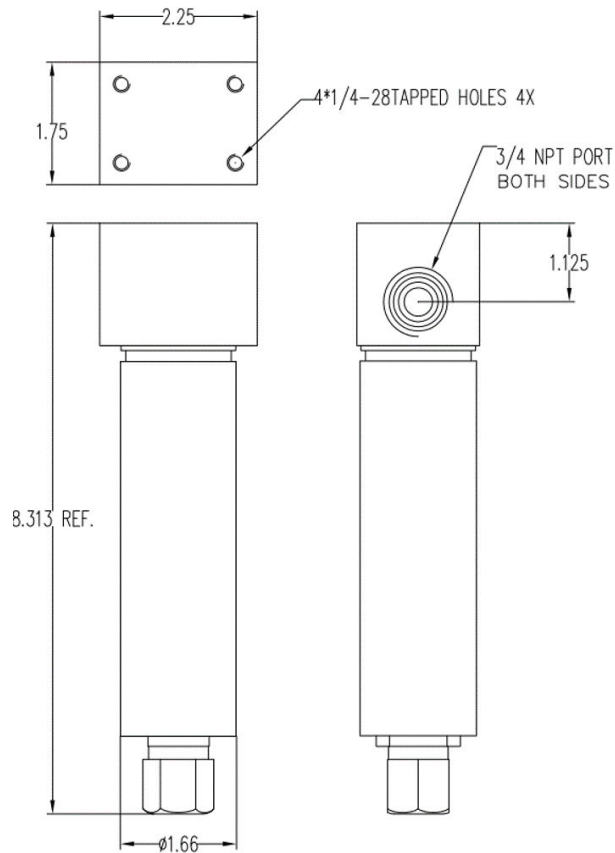


**Figure 2.** Dimension of the ST-590 and the ST-001 Tee Assembly (mm)



## 4.2 ST-590SS Piping

The ST-590SS sensor has 3/4" female NPT threaded ports on the sensor itself and therefore does not require a custom tee assembly. It is recommended that two 3/4" NPT to 1/4" tubing adapters are used to connect the sensor to the sampling system. Sample water entering the sensor must be cooled down to below 104 °F (40 °C). The sensor can be held by a 1.75-inch pipe clamp or mounted to a panel with four 1/4-28 bolts. See Figure 4 for ST-590SS dimensions.



**Figure 3.** Dimension of the ST-590SS (inch)

### 4.3 Wiring

If the power ground terminal and the negative 4–20mA terminal in the controller are internally connected (non-isolated 4–20mA input), it is unnecessary to connect the 4–20mA negative wire (green) to the 4–20mA negative terminal in the controller. If a separate DC power supply other than that from the controller is used, make sure that the output from the power supply is rated for 22–26 VDC @ 65 mA.

**\*NOTE\*** *The negative 24V power terminal (power ground) and the negative 4–20mA terminal on the ST-590 sensor are internally connected.*

Follow the wiring table below to connect the ST-590 sensor to a controller:

**Table 2.**

Wire Color	Designation
Red	24V +
Black	24V Power ground
White	4–20mA +
Green*	4–20mA -
Blue	RS-485 A
Yellow	RS-485 B
Clear	Shield, earth ground

\* Internally connected to the power ground

### 4.4 Connecting via Bluetooth

A Bluetooth adapter (P/N: MA-WB) can be used to connect a ST-590 sensor to a smart phone with the **uPyxis®** Mobile App or a computer with the **uPyxis®** Desktop App.



**Figure 4.** Bluetooth connection to ST-590 sensor

## 4.5 Connecting via USB

A USB-RS485 adapter (P/N: MA-485) can be used to connect a ST-590 sensor to a computer with the **uPyxis®** Desktop App.

**\*NOTE\*** Using non-Pyxis USB-RS485 adapters may result in permanent damage of the ST-590 sensor communication hardware.

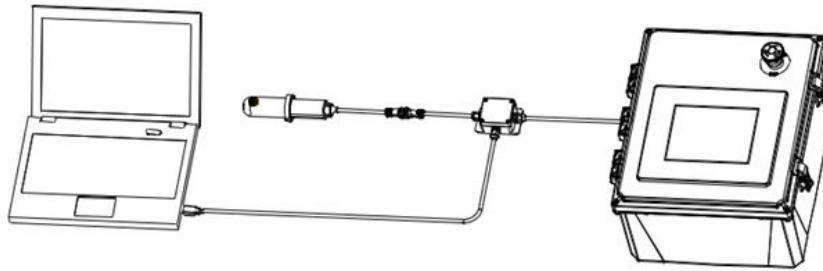


Figure 5. USB connection to ST-590 sensor

## 5 Setup and Calibration with uPyxis® Mobile App

### 5.1 Download uPyxis® Mobile App

Download **uPyxis®** Mobile App from [Apple App Store](#) or [Google Play](#).

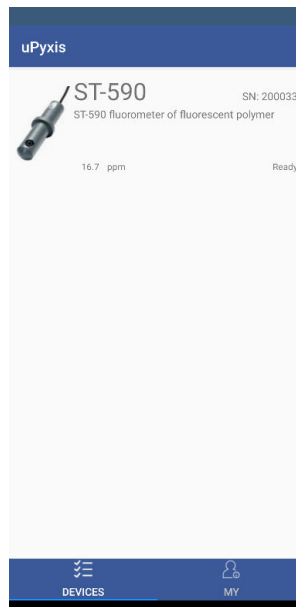


Figure 6. uPyxis® Mobile App installation

## 5.2 Connecting to uPyxis® Mobile App

Connect the ST-590 sensor to a mobile smart phone according to the following steps:

1. Open **uPyxis®** Mobile App.
2. On **uPyxis®** Mobile App, pull down to refresh the list of available Pyxis devices.
3. If the connection is successful, the ST-590 and its Serial Number (SN) will be displayed (Figure 7).
4. Press on the **ST-590 sensor image**.



**Figure 7.**

### 5.3 Calibration Screen and Reading

When connected, the uPyxis® Mobile App will default to the **Calibration** screen. From the **Calibration** screen, you can perform calibrations by pressing on **Zero Calibration**, **Slope Calibration**, and **4–20mA Span**. Follow the screen instructions for each calibration step.

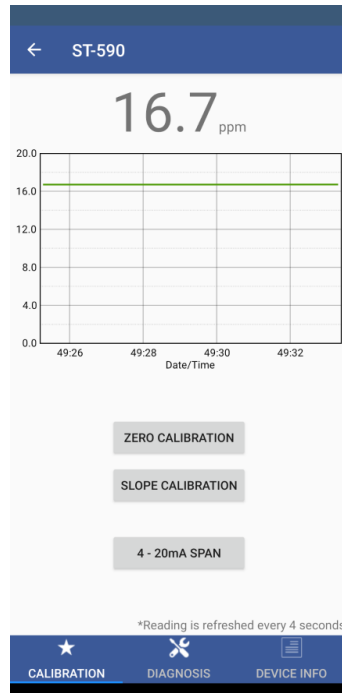


Figure 8.

### 5.4 Diagnosis Screen

From the **Diagnosis** screen, you can check the diagnosis condition as well as **Export & Upload**. This feature may be used for technical support when communicating with [service@pyxis-lab.com](mailto:service@pyxis-lab.com).

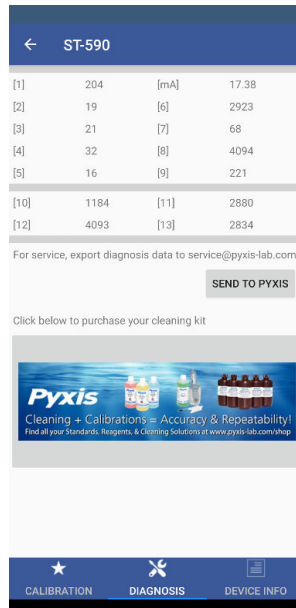


Figure 9.

### 5.5 Device Info Screen

From the **Device Info** screen. You can name the Device or Product as well as set the Modbus address.

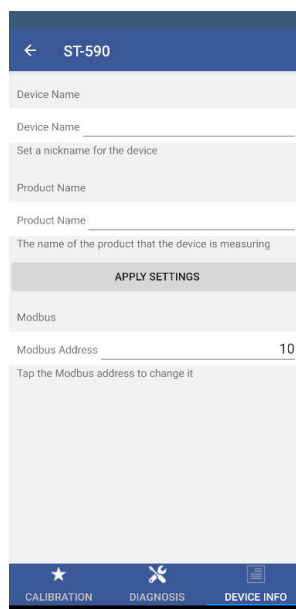
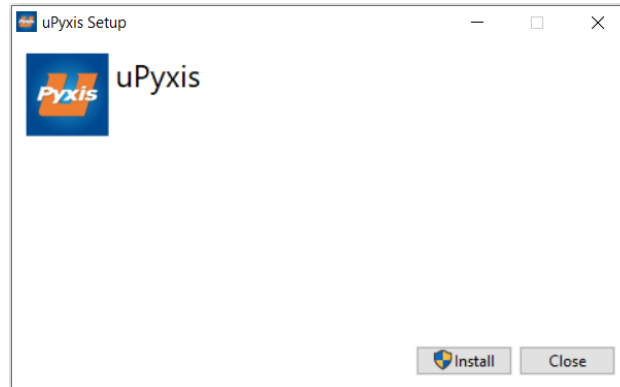


Figure 10.

## 6 Setup and Calibration with uPyxis® Desktop App

### 6.1 Install uPyxis® Desktop App

Download the latest version of **uPyxis®** Desktop software package from: <https://pyxis-lab.com/upyxis/> this setup package will download and install the Microsoft.Net Framework 4.5 (if not previously installed on the PC), the USB driver for the USB-Bluetooth adapter (MA-NEB), the USB-RS485 adapter (MA-485), and the main **uPyxis®** Desktop application. Double click the **uPyxis.Setup.exe** file to install.



**Figure 11.** uPyxis® Desktop App installation

Click **Install** to start the installation process. Follow the screen instructions to complete the USB driver and **uPyxis®** installation.

## 6.2 Connecting to uPyxis® Desktop App

Connect the ST-590 sensor to a Windows computer using either a Bluetooth/USB adapter (P/N: MA-NEB) or a USB-RS485 adapter (P/N: MA-485) according to the following steps:

1. Plug the Bluetooth/USB adapter or USB-RS485 adapter into a USB port in the computer.
2. Launch **uPyxis®** Desktop App.
3. On **uPyxis®** Desktop App, click Device → **Connect via USB-Bluetooth** or **Connect via USB-RS485** (Figure 12).
4. If the connection is successful, the ST-590 and its Serial Number (SN) will be displayed in the left pane of the **uPyxis®** window.

**\*NOTE\*** After the sensor and Bluetooth is powered up, it may take up to 10 seconds for the adapter to establish the wireless signal for communication.

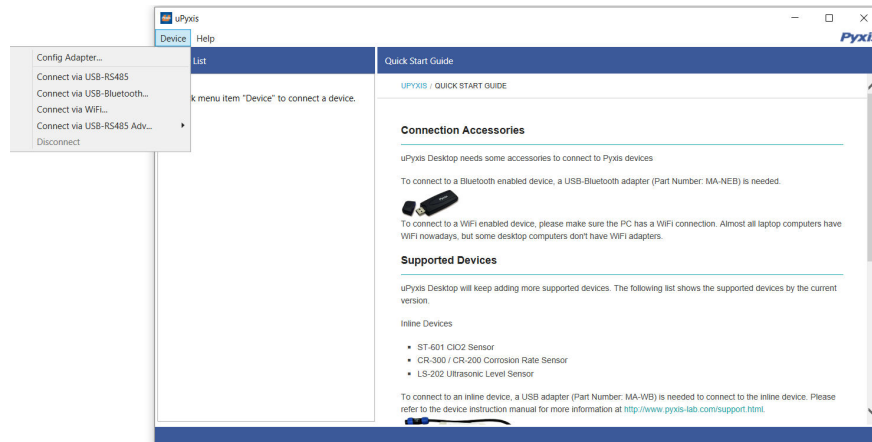


Figure 12.



### 6.3 Information Screen

Once connected to the device, a picture of the device will appear on the top left corner of the window and the uPyxis® Desktop App will default to the **Information** screen. On the **Information** screen you can set the information description for **Device Name**, **Product Name**, and **Modbus Address**, then click **Set** to save.

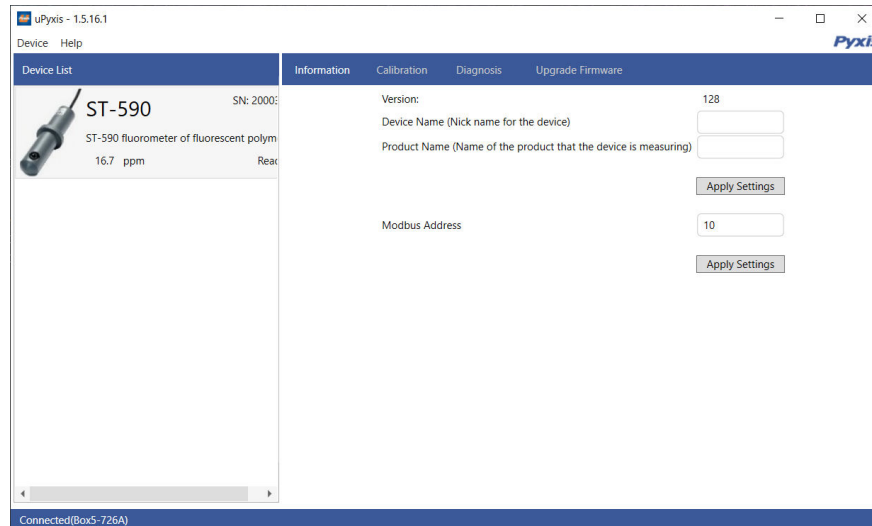


Figure 13.

### 6.4 Calibration Screen

To calibrate the device, click on **Calibration**. On the **Calibration** screen there are three calibration tabs, **Zero Calibration**, **Slope Calibration**, and **4-20mA Span**. The screen also displays the reading of the device. The reading refresh rate is every 4 seconds.

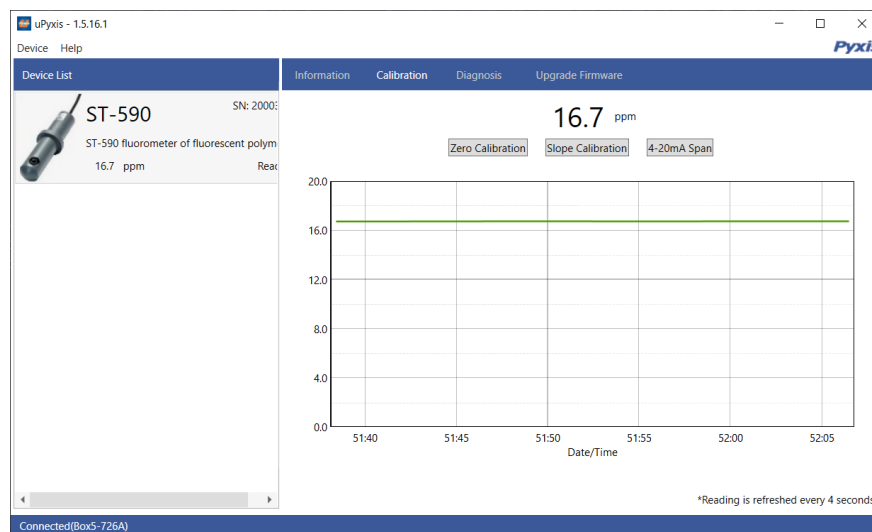
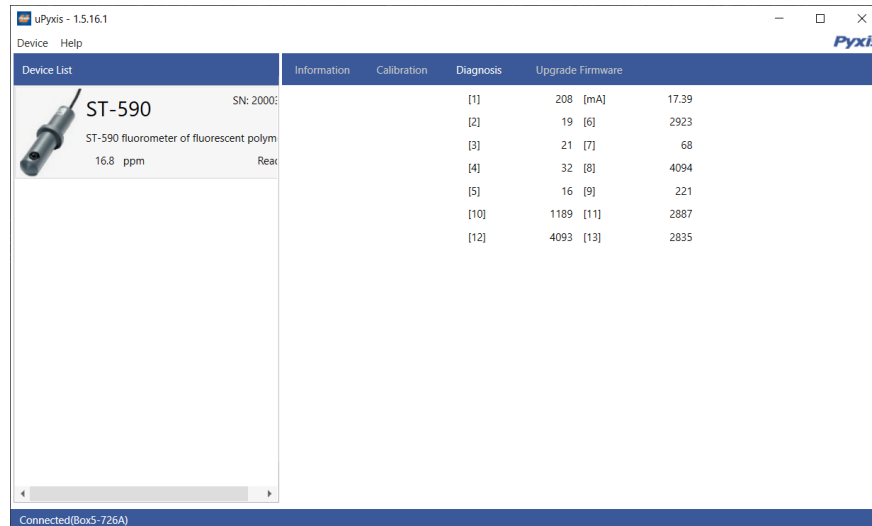



Figure 14.

## 6.5 Diagnosis Screen

After the device has been calibrated and installation has been completed, to check diagnosis, click on **Diagnosis**. When in the **Diagnosis** screen you can view the Diagnosis Condition of the device. This feature may be used for technical support when communicating with [service@pyxis-lab.com](mailto:service@pyxis-lab.com).



Device List	Information	Calibration	Diagnosis	Upgrade Firmware
 <b>ST-590</b> SN: 2000: ST-590 fluorometer of fluorescent polym 16.8 ppm Reac			[1] 208 [mA] 17.39	
			[2] 19 [6] 2923	
			[3] 21 [7] 68	
			[4] 32 [8] 4094	
			[5] 16 [9] 221	
			[10] 1189 [11] 2887	
			[12] 4093 [13] 2835	

Connected(Box5-726A)

Figure 15.

## 7 Outputs

### 7.1 4–20mA Output Setup

The 4–20mA output of the ST-590 sensor is scaled as:

- Fluorescent Polymer:
  - 4 mA = 0 ppm
  - 20 mA = 20 ppm

## 7.2 Adjusting 4–20mA Span

Users may adjust the output scale using 4–20mA Span to change the Fluorescent Polymer ppm value corresponding to the 20 mA output via uPyxis®. For the uPyxis® Mobile App, press **4-20mA Span** found on the **Calibration and Reading Screen**, shown in Figure 16. For the uPyxis® Desktop App, click **4-20mA Span** found on the **Calibration Screen**, shown in Figure 17.

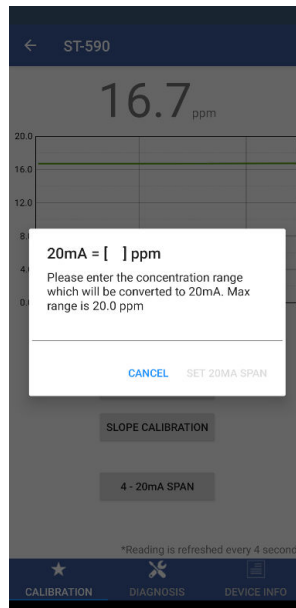


Figure 16.

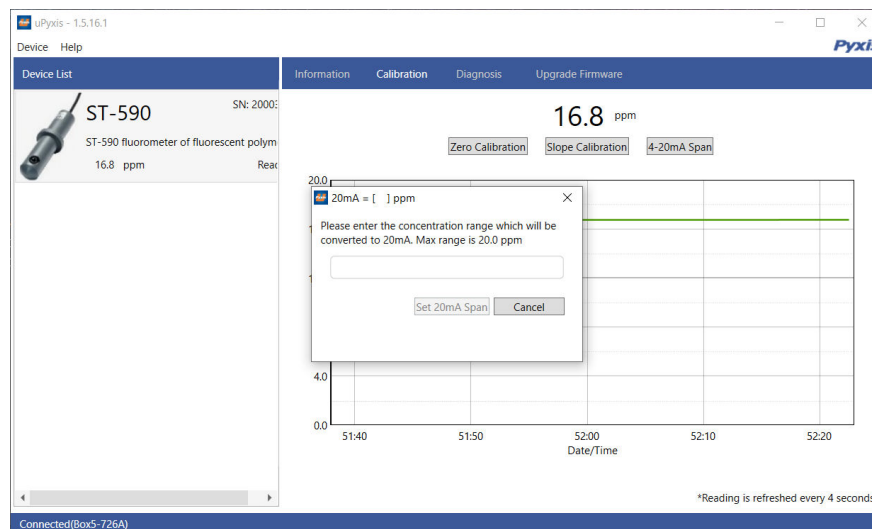


Figure 17.

## 7.3 Communication using Modbus RTU

The ST-590 sensor is configured as a Modbus slave device. In addition to the Fluorescent Polymer ppm value, many operational parameters, including warning and error messages, are available via a Modbus RTU connection. Contact Pyxis Lab Customer Service ([service@pyxis-lab.com](mailto:service@pyxis-lab.com)) for more information.

## 8 Sensor Maintenance and Precaution

The ST-590 sensor is designed to provide reliable and continuous Fluorescent Polymer readings even when installed in moderately contaminated industrial cooling waters. Although the optics are compensated for the effects of moderate fouling, heavy fouling will prevent the light from reaching the sensor, resulting in low readings and the potential for product overfeed if the ST-590 sensor is used as part of an automated control system. When used to control product dosing, it is suggested that the automation system be configured to provide backup to limit potential product overfeed, for example by limiting pump size or duration, or by alarming if the pumping rate exceeds a desired maximum limit.

The ST-590 sensor is designed to be easily removed, inspected, and cleaned if required. It is suggested that the ST-590 sensor be checked for fouling and cleaned/calibrated on a monthly basis. Heavily contaminated waters may require more frequent cleanings. Cleaner water sources with less contamination may not require cleaning for several months.

### 8.1 Methods to Cleaning the ST-590 Sensor

Any equipment in contact with industrial cooling systems is subject to many potential foulants and contaminants. Our inline sensor cleaning solutions below have been shown to remove most common foulants and contaminants. A small, soft bristle brush, Q-Tips cotton swab, or soft cloth may be used to safely clean the sensor housing and the quartz optical sensor channel. These components and more come with a Pyxis Lab **Inline Probe Cleaning Solution Kit** (P/N: SER-01) which can be purchased at our online E-Store <https://pyxis-lab.com/product/probe-cleaning-kit/>



Figure 18. Inline Probe Cleaning Solution Kit

To clean the ST-590 sensor, soak the lower half of the sensor in 100 mL inline sensor cleaning solution for 10 minutes. Rinse the ST-590 sensor with distilled water and then check for the flashing blue light inside the ST-590 sensor quartz tube. If the surface is not entirely clean, continue to soak the ST-590 sensor for an additional 10 minutes. Use the small, soft bristle brush and Q-Tips cotton swabs as necessary to remove any remaining contaminants in the ST-590 sensor quartz tube.

## 8.2 Storage

Avoid long term storage at temperature over 100 °F. In an outdoor installation, properly shield the ST-590 sensor from direct sunlight and precipitation.

## 9 Troubleshooting

If the ST-590 sensor output signal is not stable and fluctuates significantly, make an additional ground connection — connect the clear (shield, earth ground) wire to a conductor that contacts the sample water electrically such as a metal pipe adjacent to the ST-590 tee.

Carry out routine calibration verification against a qualified Fluorescent Polymer standard. After properly cleaning the ST-590 sensor, carry out the zero point calibration with distilled water and slope calibration using the qualified Fluorescent Polymer standard.

## 10 Contact Us

### Pyxis Lab, Inc

1729 Majestic Dr. Suite 5

Lafayette, CO 80026 USA

[www.pyxis-lab.com](http://www.pyxis-lab.com)

Phone: +1 (866) 203-8397

Email: [service@pyxis-lab.com](mailto:service@pyxis-lab.com)